



SO TOUGH,  
WE GUARANTEE IT.



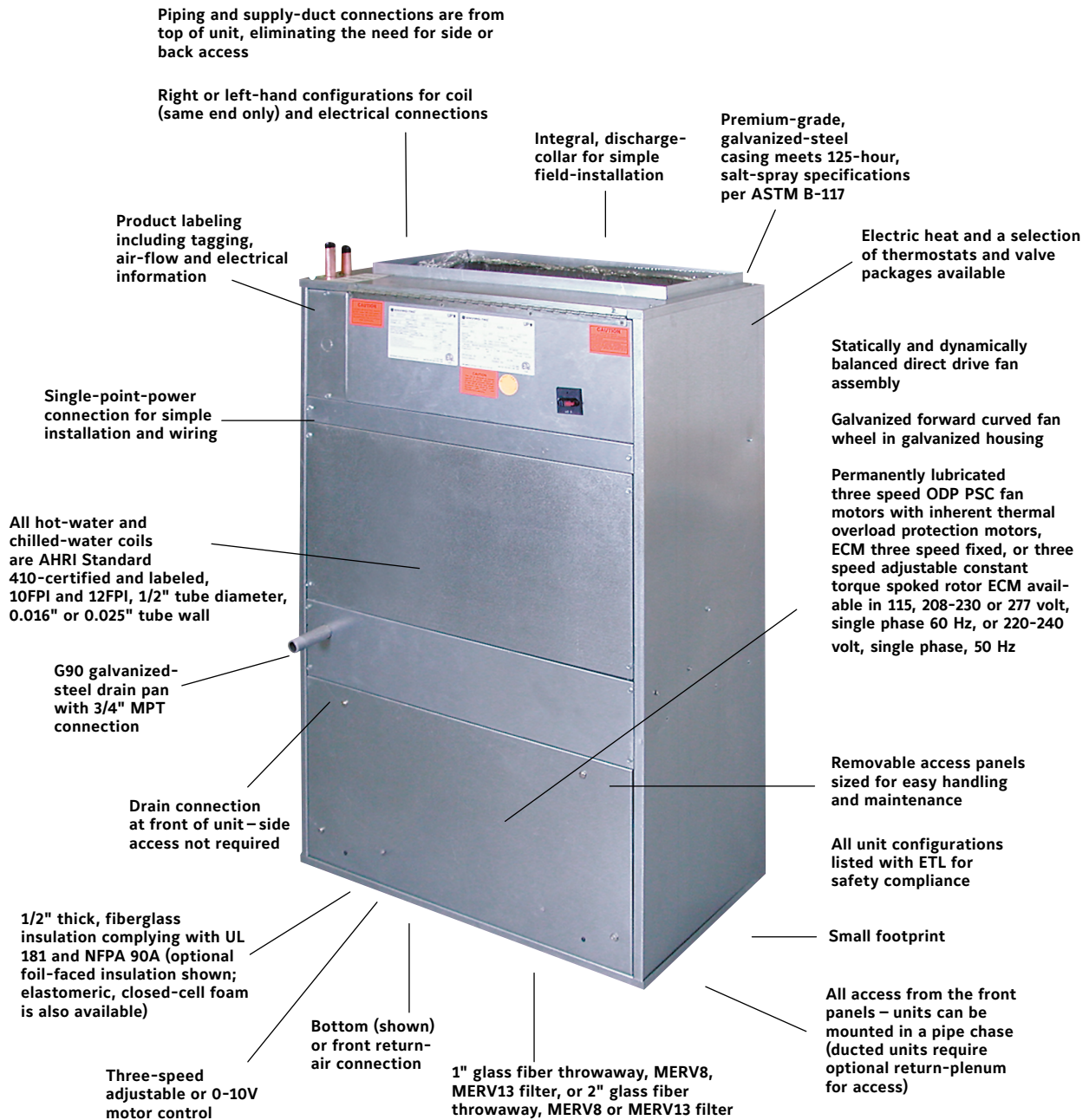
## RAVC Sales Guide

FAN COIL UNITS HIGH-PERFORMANCE, VERTICAL

- /// RAVC Bottom Return
- /// RAVC Front Return



# Model RAVC construction features



# RAVC Fan-Coil Units: The vertical, high- performance solution

## Owners

An extensive variety of components provide a flexible and versatile fan-coil unit to meet the needs of your building. Plus, the variety of options available with RAVC units is where you find the versatility to fit any Heating, Ventilating, and Air-Conditioning (HVAC) need for your facility.

Options include:

- Mixing box without linkage
- Rear or bottom return
- Bottom-return plenum
- Piping Packages
- Single-wall, stainless-steel drain pans
- Elastomeric, closed-cell foam or foil-faced insulation
- Electric heat with single-point-power connection

## Designers

RAVC vertical, high-performance fan-coil units are designed to maximize selection flexibility, making them versatile enough to fit any HVAC design need. And the units are designed to exceed the stringent quality standards of the institutional market, while remaining cost-competitive in the light-commercial segment. RAVC units set the new standard for quality, flexibility, and competitive pricing.

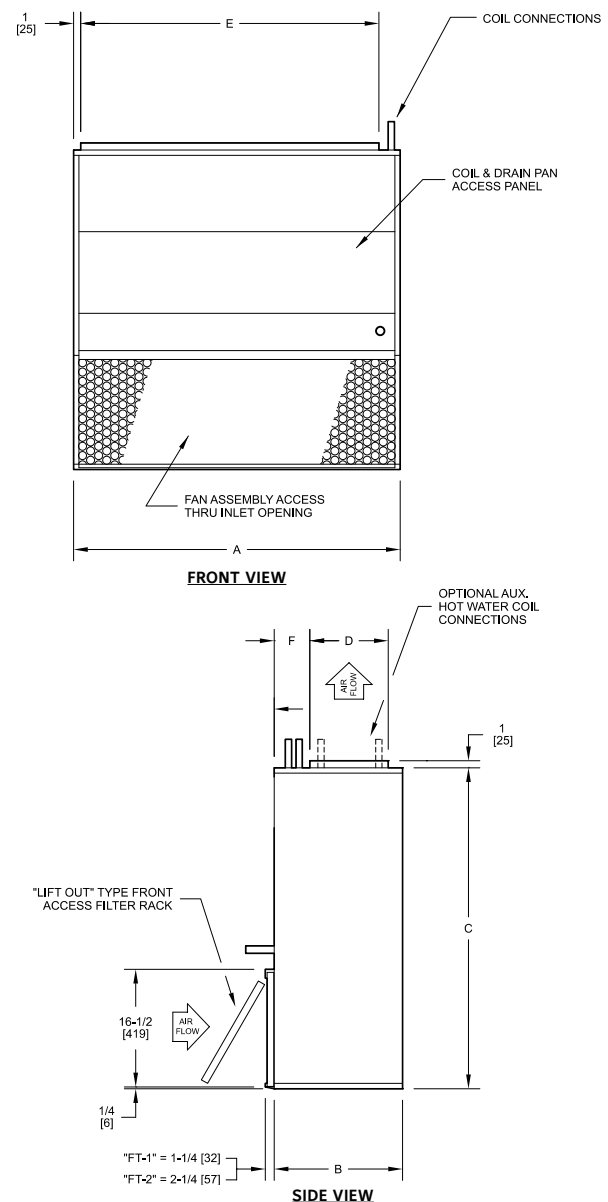
## Contractors

Units are shipped completely assembled from facility found to conform to the Quality Management System standard: ISO 9001:2015, reducing field-installation time and labor.

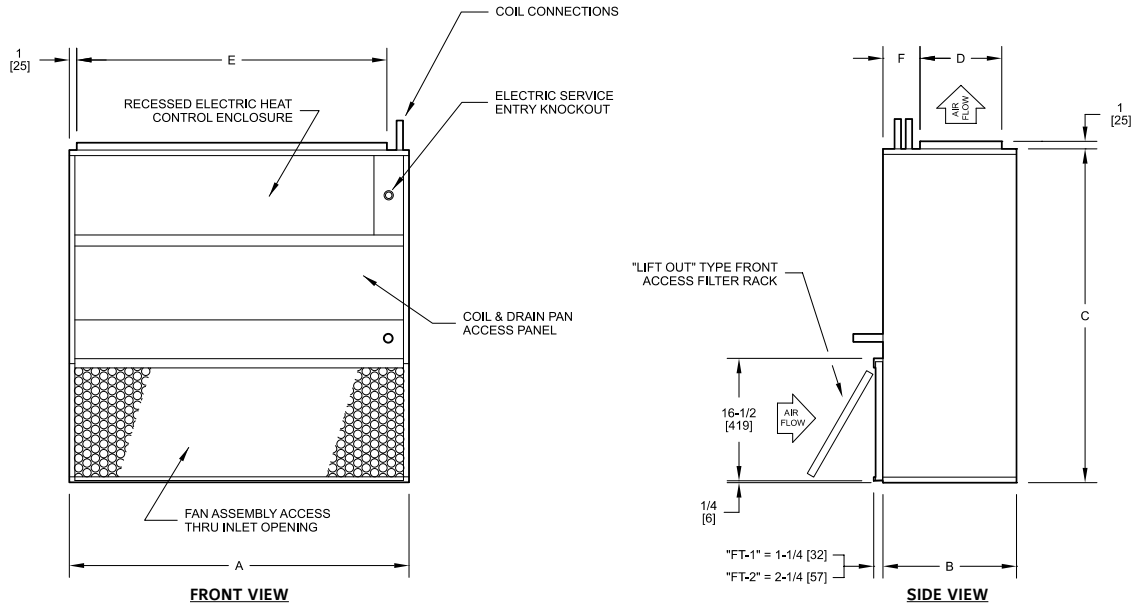
All units comply with the latest edition of Air-Conditioning and Refrigeration Institute (AHRI) Standard 440 for testing and rating fan-coil units, are certified, and display the AHRI symbol. Sizes 16 and 20 exceed the maximum airflow rate in AHRI Standard 440 and are not certified.



## RAVC Vertical Units (Without Electric Heat)

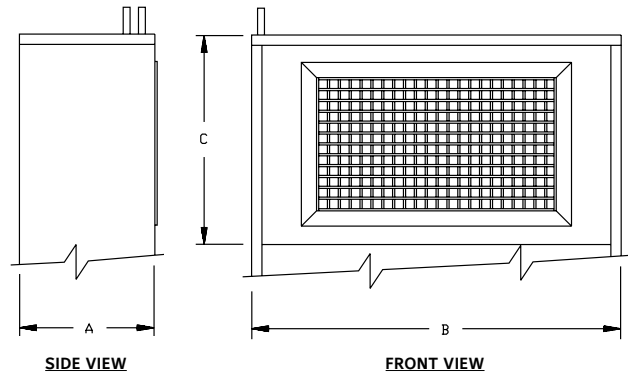


## RAVC Vertical Units, with Electric Heat

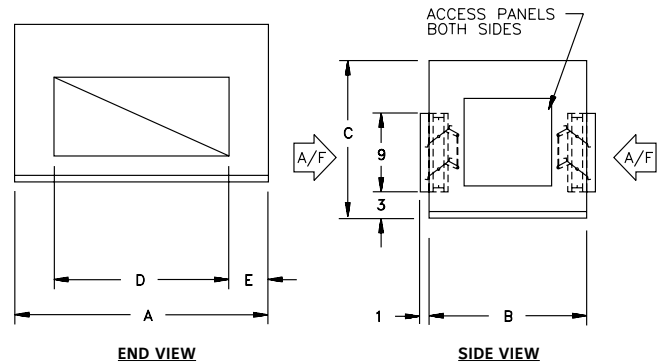


Unit Size	Dimensions					
	A	B	C	D	E	F
<b>04-06</b>	22" [559]	15" [381]	48" [1219]	7 1/2" [190]	17" [432]	5 3/4" [102]
<b>08</b>	22" [559]	15" [381]	48" [1219]	10" [254]	17" [432]	3 1/4" [83]
<b>10-12</b>	29" [737]	18" [457]	48" [1219]	12 3/4" [324]	24" [610]	3 3/4" [95]
<b>16-20</b>	46" [1168]	18" [457]	48" [1219]	12 3/4" [324]	39" [991]	3 3/4" [95]

## Supply Plenum, with Double-Deflection Grille



## Mixing Box Section



Unit Size	Dimensions			
	A	B	C	Supply Grille W x H
<b>04-08</b>	15" [381]	22" [559]	15" [381]	18" x 8" [457 x 203]
<b>10-12</b>	18" [457]	29" [737]	18" [457]	24" x 12" [610 x 305]
<b>16-20</b>	18" [457]	46" [1168]	18" [457]	40" x 12" [1016 x 305]

Unit Size	Dimensions				
	A	B	C	D	E
<b>04-08</b>	22" [559]	15" [381]	15" [381]	15" [381]	3-1/2" [89]
<b>10-12</b>	29" [737]	18" [457]	18" [457]	20" [508]	4-1/2" [114]
<b>16-20</b>	46" [1168]	18" [457]	18" [457]	36" [914]	5" [127]

## AHRI Standard Ratings

Unit Size	AHRI 440 Certified	Coil		Airflow CFM (Dry Flow)	Cooling Capacity		Water		Power Input (Watts)
		Rows	FPI		QT (BTUH)	QS (BTUH)	Flow Rate GPM	WPD ft. wg	
04	Yes	4	10	400	13.6	9.4	2.7	3.2	250
06	Yes	4	10	600	18.0	12.9	3.6	3.6	275
08	Yes	4	10	800	24.3	17.2	4.9	4.8	425
10	Yes	4	10	1000	33.6	23.0	6.7	5.8	450
12	Yes	4	10	1200	40.4	27.5	8.1	8.2	850
16		4	10	1600	57.6	38.4	11.5	9.8	850
20		4	10	2000	66.4	45.7	13.3	4.3	900

## Heating Capacity

Unit Size	Nominal CFM	1 Row			2 Row		
		QS (MBH)	GPM	WPD	QS (MBH)	GPM	WPD
04	400	12.5	1.3	1.5	21.2	2.2	1.5
06	600	14.9	1.5	2.1	26.4	2.7	2.2
08	800	20.5	2.1	4.9	36.3	3.7	4.9
10	1000	30.7	3.2	2.9	52.9	5.4	4.3
12	1200	33.5	3.4	3.4	58.5	6.0	5.2
16	1600	50.4	5.2	4.4	89.0	9.1	12.3
20	2000	56.0	5.7	5.4	100.9	10.3	15.7

## Unit Weight Data

Component		Unit Size						
		04	06	08	10	12	16	20
Base Unit		81 [37]	81 [37]	103 [47]	103 [47]	106 [48]	128 [58]	134 [61]
Missing Box		24 [11]	24 [11]	24 [11]	37 [17]	37 [17]	54 [24]	54 [24]
Supply Plenum		21 [10]	21 [10]	21 [10]	33 [15]	33 [15]	48 [22]	48 [22]
Return Plenum		17 [8]	17 [8]	17 [8]	25 [11]	25 [11]	33 [15]	33 [15]
Coil Rows	1 Row: Dry	7 [3]	7 [3]	8 [4]	11 [5]	11 [5]	16 [7]	16 [7]
	1 Row: Wet	8 [4]	8 [4]	9 [4]	14 [6]	14 [6]	19 [9]	19 [9]
	2 Row: Dry	10 [5]	10 [5]	12 [5]	17 [8]	17 [8]	25 [11]	25 [11]
	2 Row: Wet	12 [5]	12 [5]	14 [6]	21 [10]	21 [10]	31 [14]	31 [14]
	3 Row: Dry	16 [7]	19 [9]	21 [10]	27 [12]	29 [13]	38 [17]	46 [21]
	3 Row: Wet	20 [9]	23 [10]	26 [12]	35 [16]	38 [17]	49 [22]	60 [27]
	4 Row: Dry	20 [9]	23 [10]	26 [12]	34 [15]	37 [17]	49 [22]	59 [27]
	4 Row: Wet	25 [11]	29 [13]	34 [15]	44 [20]	48 [22]	64 [29]	77 [35]

### GENERAL NOTES:

- All dimensions are inches [millimeters] ±1/4" [6mm]. Metric values are soft conversion.
- Front access only is required for installation and service.
- Right-hand unit shown, left-hand unit opposite.

### SUPPLY PLENUM NOTE:

- C-dimension adds to basic unit height.

### MIXING BOX NOTES:

- Return-air plenum (one inlet, no dampers) is available in lieu of mixing-box section.
- C-dimension adds to basic unit height.
- Linkage and actuator for damper control shall be provided/installed by others.

### AHRI STANDARD RATING NOTES:

- Based on 80°F Dry Bulb (DB) and 67°F Wet Bulb (WB) Entering Air Temperature (EAT), 45°F Entering Water Temperature (EWT), 10°F temperature rise, high fan speed. Motor type shown above is Permanent Split Capacitor (PSC) and motor voltage is 115/1/60. Airflow under dry coil conditions. All models tested at 0.05" external static pressure. ECM also available.
- Airflow CFM on sizes 16 and 20 exceed minimum ratings in Air-Conditioning and Refrigeration Institute (AHRI) Standard 440 and are not certified.

### HEATING CAPACITY NOTE:

- Based on 70°F EAT, 180°F EWT, 20°F temperature drop, high fan speed.

### UNIT WEIGHT DATA NOTE:

- Unit weight data is shipping weight in pounds [kilograms].

**NOTE:** Drawings are not to scale and are not for installation purposes. Refer to [www.superiorrex.com](http://www.superiorrex.com) for more information. All data and dimensions are subject to change without notice.

# RAVC Fan-Coil Unit Features

## STANDARD FEATURES:

### Construction

- AHRI Standard 440-certified and labeled
- Heavy-gauge, galvanized-steel construction
- 1/2" thick, fiberglass insulation, mechanically fastened for added security
- 1" duct-discharge collar
- Removable access panels for easy handling

### Coils

- Mechanically-expanded copper tubes leak tested to a minimum 450 psig air pressure under water
- Manual air-vent plug on all water coils
- Copper sweat connections
- 450 psig working pressure at 200°F
- Evaporator coils are factory-sealed and charged with a minimum of 5 psig nitrogen or refrigerated dry air
- AHRI Standard 410-certified and labeled
- Cooling: 3 or 4-row chilled-water
- Heating: 1 or 2-row hot-water – reheat position
- 1/2" O.D., seamless copper tubes
- 0.016" tube-wall thickness
- Left-hand or right-hand connections
- Removable for service

### Filter Rack and Filters

- 1" flat filter rack
- 1" nominal throwaway filters

### Drain Pans

- Single-wall, galvanized-steel, externally insulated (fire retardant and anti-microbial closed-cell foam)
- Positively sloped to drain connection
- 3/4" male pipe thread (MPT), galvanized drain connection

### Fan Assemblies

- Forward-curved, double-width, double inlet-(DWDI), centrifugal-type
- 115, 208-230 and 277-volt, single-phase, three-tap, permanent-split-capacitor (PSC) motors
- Quick-disconnect motor connections
- Removable fan(s)/motor(s) for service

### Electrical Components

- cETL listed for safety compliance
- Electrical junction box for field-wiring terminations
- Terminal block for field connections

### Electric Heat

- cETL listed as an assembly for safety compliance
- Integral electric-heat assembly with removable elements for easy service
- Automatic-reset primary and back-up manual-reset secondary thermal limits
- Single-point-power connection
- Hinged electrical enclosure

## OPTIONAL FEATURES:

### Construction

- Scrim-reinforced, foil-faced insulation meeting American Society for Testing and Materials (ASTM) C1136 for mold, mildew, and humidity resistance
- 1/2" foil faced fiberglass insulation
- 1/2" elastomeric, closed-cell-foam insulation
- Double-deflection discharge grille
- Quarter-turn, quick-open, access-panel fasteners
- Return and supply plenums

### Coils

- Automatic air vents
- Stainless-steel coil casings
- 0.025" tube-wall thickness

### Piping Packages

- 1/2", 3/4", 1", 1¼", 1½" 2-way and 3-way, normally closed, two position electric motorized valves
- Isolation ball valves with memory stop
- 24V floating point modulating control valves
- 0-10V proportional control valves
- Fixed (FC) and adjustable (PICV) flow control devices
- Y-strainers, P/T ports

### Filter Rack and Filters

- 2" flat filter rack
- Spare throwaway filters

### Inlet Damper Section

- Factory-assembled and installed
- Heavy-gauge, galvanized-steel, formed-blade dampers
- Low-leak dampers with extruded-vinyl blade seals and flexible-metal jamb seals
- Parallel-blade operation

### Drain Pans

- Single-wall, stainless-steel with external insulation

### Fan Assemblies

- 115, 208-230 and 277-volt, single-phase, three-tap, electrically commutated (ECM) motors, fixed or adjustable

### Electrical Components

- Front-access electrical enclosure
- Fan-relay packages
- Toggle-disconnect switch and condensate-overflow switch (drain pan)
- Main fusing
- Unit and remote-mounted, three-speed, fan switches

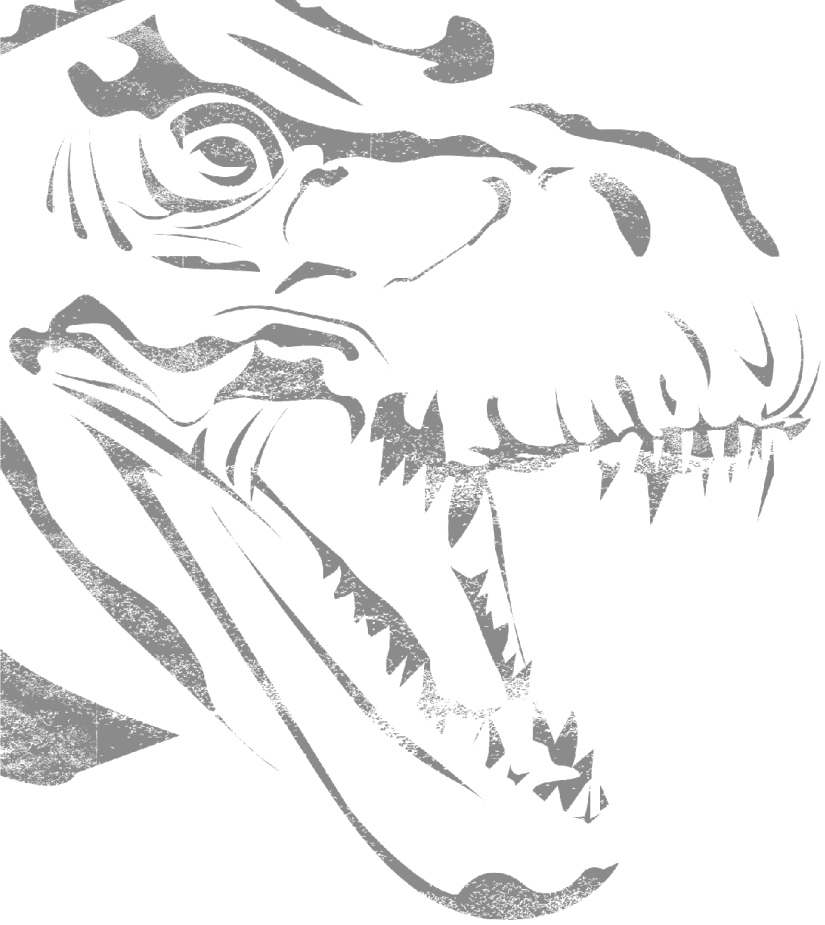
### Electric Heat

- Door-interlocking disconnect switches
- Main fusing

### Thermostats

- Remote-mounted analog, digital-display, or programmable
- 2-pipe and 4-pipe control sequences
- Automatic and manual changeover
- Integral, three-speed, fan switches





Superior Rex  
605 Shiloh Road  
Plano Texas 75074  
(ofc): 972.212.4800  
(fax): 972.212.4884

© 2025 Air Distribution Technologies IP, LLC.

Product and service names referenced herein are trademarks of Air Distribution Technologies IP, LLC in the United States and other countries and regions. All product specifications reflect the available information at the time of printing this brochure. Air Distribution Technologies IP, LLC is a subsidiary of Air Distribution Technologies, which reserves the right to revise or modify products and/or specifications without notice.

SO TOUGH, WE GUARANTEE IT! | [www.superiorrex.com](http://www.superiorrex.com)